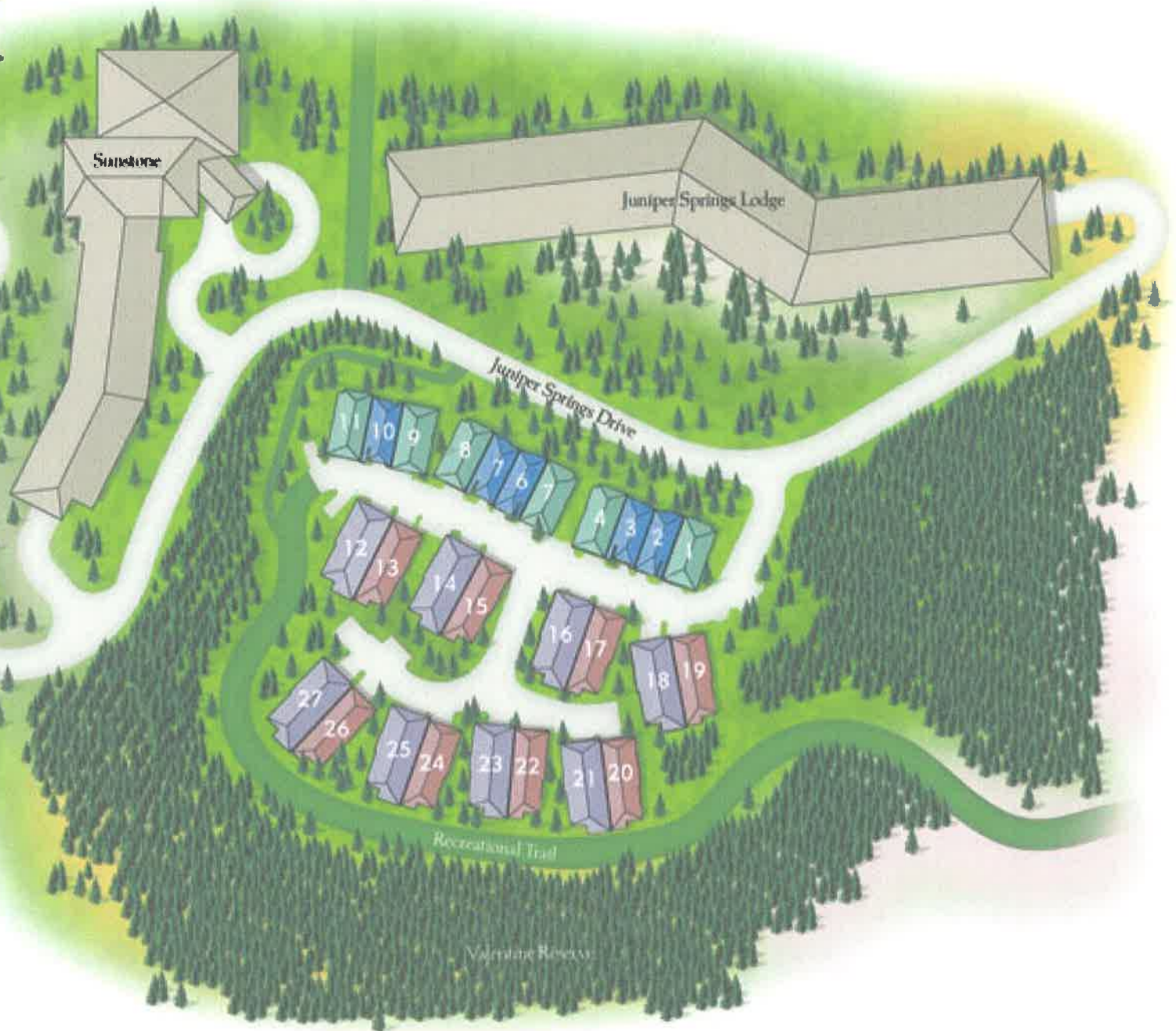


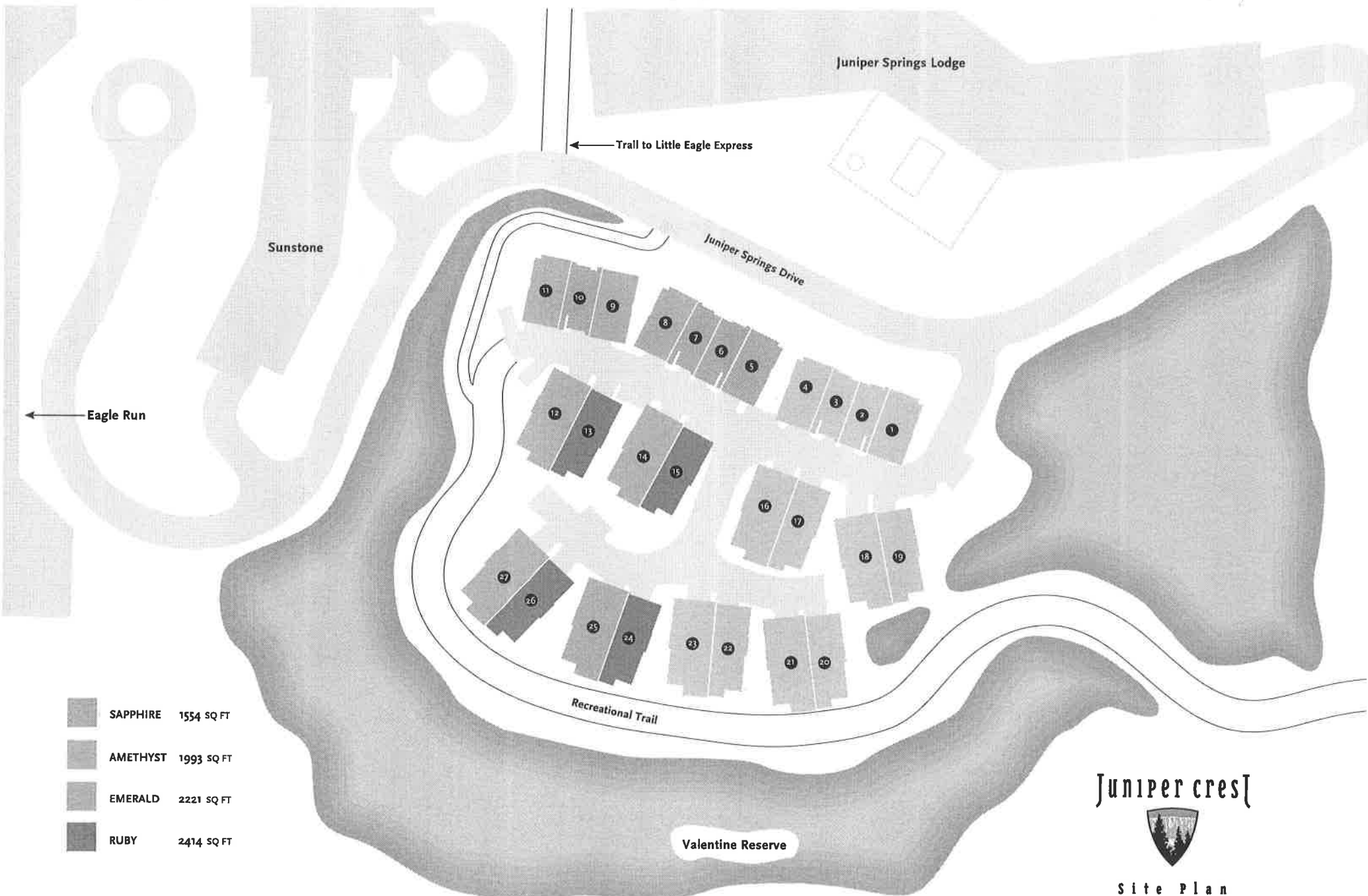
# Juniper cres



SITE MAP

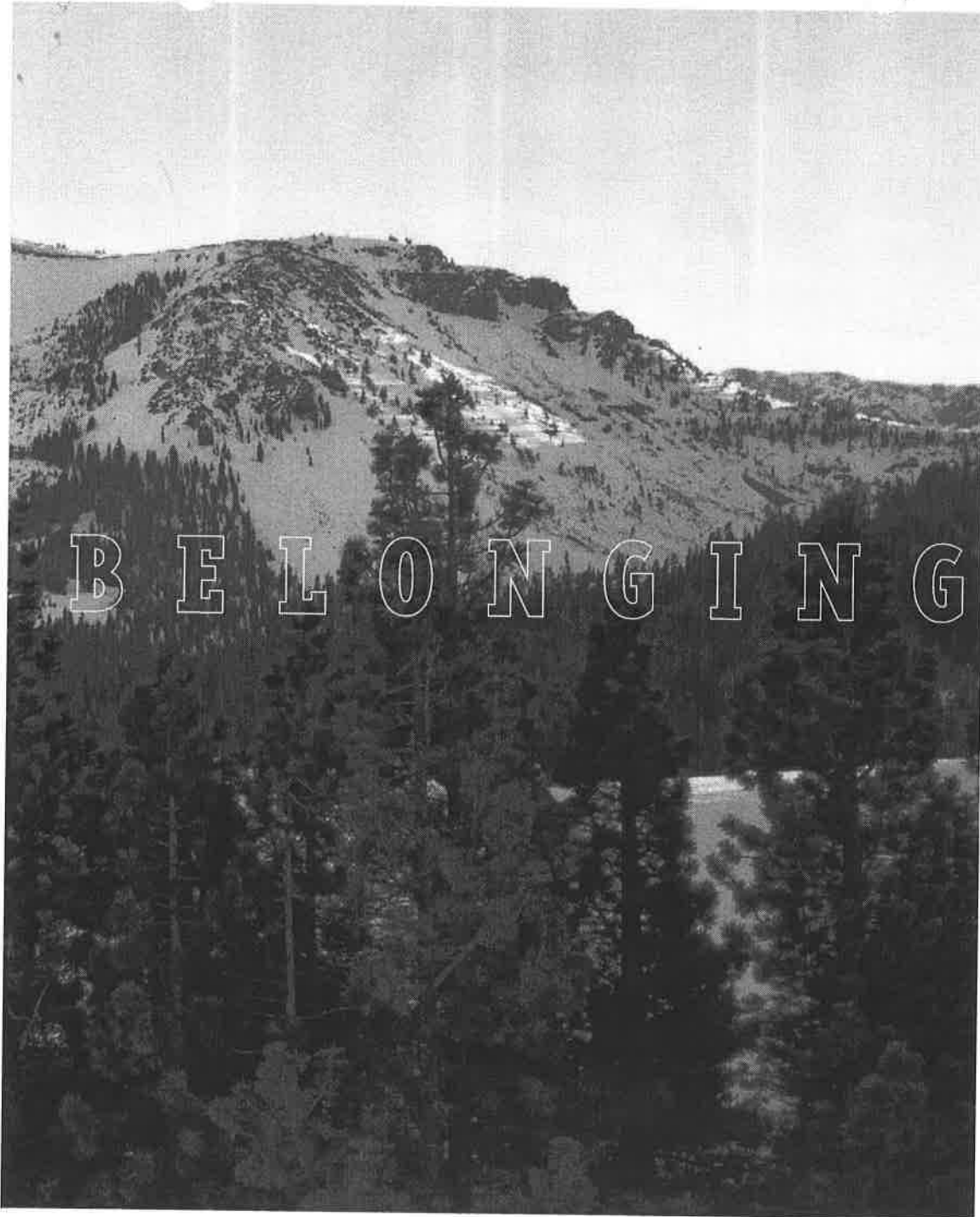


- AMETHYST 1993 SQ FT
- EMERALD 2221 SQ FT
- RUBY 2414 SQ FT
- SAPPHIRE 1554 SQ FT



- SAPPHIRE** 1554 SQ FT
- AMETHYST** 1993 SQ FT
- EMERALD** 2221 SQ FT
- RUBY** 2414 SQ FT

**Juniper crest**  
  
 Site Plan



B E L O N G I N G

## Juniper crest



### A HOME BELONGED HERE.

MAMMOTH ROCK, THE SHERWINS, MAMMOTH CREST, CRYSTAL CRAG, VALENTINE RESERVE. MAGNIFICENCE SO BARE, IT'S PROTECTED. VIEWS SO CAPTIVATING, THEY DESERVE AN AUDIENCE. HENCE, JUNIPER CREST WAS DESIGNED. EACH HOME LOOKS OUT OVER THIS REMARKABLE, NATURAL BEAUTY.

THESE ARE VIEWS YOU'LL WANT TO SHARE, SO YOUR HOME WAS MADE FOR ENTERTAINING GUESTS. IT'S BEAUTIFULLY CRAFTED AND IMMENSELY LIVEABLE.

NEVER AGAIN WILL THERE BE HOMES LIKE THESE IN THE SKI-IN/SKI-OUT NEIGHBORHOOD OF JUNIPER SPRINGS. YOURS IS THE BEST, THE LAST AND THE MOST EXCLUSIVE. ENJOY.



This map is an artistic rendering only and is not intended to accurately show improvements as they exist today. Improvements shown on this rendering may not exist and may not be developed in the future.

MAMMOTH MOUNTAIN  
11,053 ft.



PROJECT SIERRA

EACH OF THESE HOMES WAS DESIGNED FOR THE SITE.  
**BREATHTAKING VIEWS. LARGE WINDOWS.**  
AND EXCEPTIONAL DECKS WHERE YOU CAN SIT QUIETLY WITH  
A CUP OF COFFEE AND ENJOY YOUR SURROUNDINGS.



love

Illustration is an artistic representation only.



## YOUR HOME WAS DESIGNED FOR TOTAL LIVING.

### ARCHITECTURAL DETAILS

- SOUTH-FACING DECKS
- FULL-HEIGHT WINDOWS
- SOLID WOOD ENTRY DOOR WITH WROUGHT IRON HARDWARE
- HAND-PEELED LOGS
- CUSTOM STONE WORK
- TWO-CAR GARAGES

### INTERIOR FINISHES AND AMENITIES

- SPACIOUS, OPEN FLOOR PLAN
- OPEN STAIRCASE
- SLATE TILE IN ENTRY, BATHROOMS AND KITCHEN
- IN-FLOOR HEATING THROUGHOUT
- CUSTOM CHERRY-STAINED WINDOWS, KITCHEN CABINETS, INTERIOR DOORS AND BASEBOARDS
- CUSTOM FULL-HEIGHT KITCHEN CABINETS WITH GLASS DOORS AT UPPER CABINETS

- GRANITE SLAB COUNTER TOPS IN KITCHEN AND BATHROOMS
- METAL-CLAD WOOD WINDOWS
- WOOD BLINDS
- STAINLESS STEEL APPLIANCE PACKAGE WITH GAS RANGE
- CUSTOM LIGHTING PACKAGE
- JETTED TUBS IN ENSUITE BATHROOMS
- BRUSHED NICKEL KITCHEN AND BATHROOM FAUCETS
- LARGE PROPANE FIREPLACE WITH HEAVY TIMBER MANTLE

### OPTIONAL FEATURES

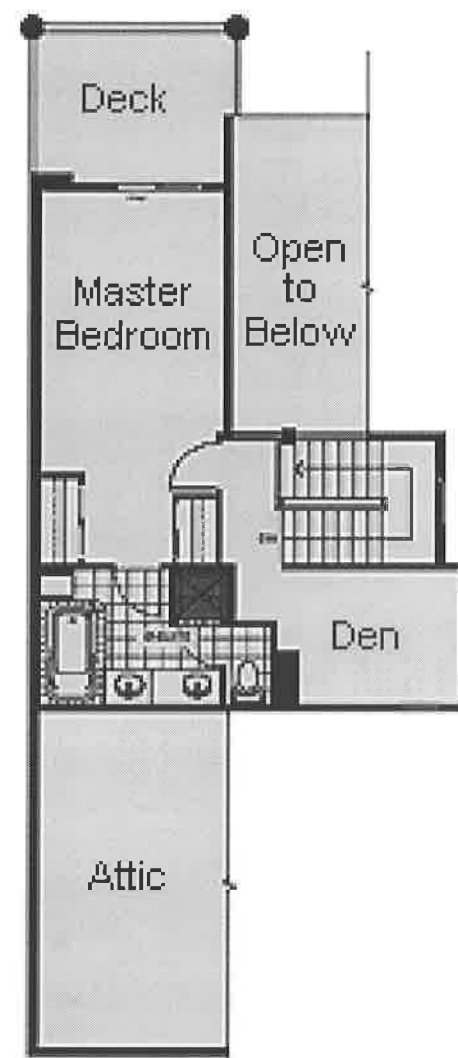
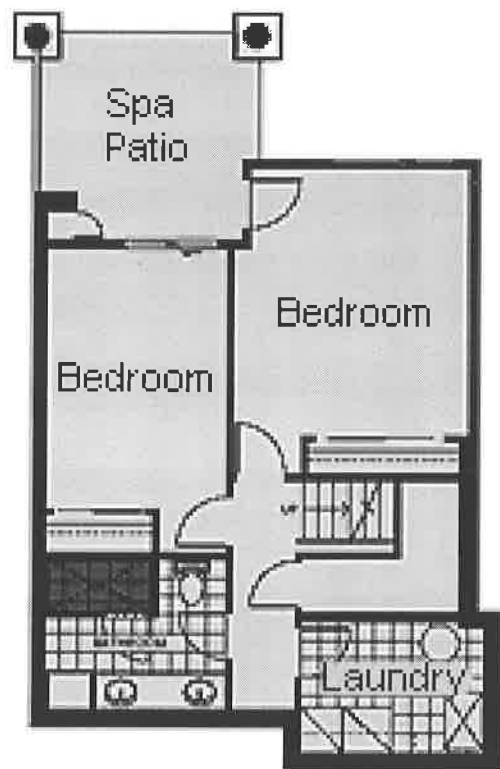
- HARDWOOD FLOORS IN LIVING AND DINING ROOMS
- OUTDOOR HOT TUB
- VIKING KITCHEN APPLIANCE PACKAGE
- PROPANE FIREPLACE IN THE FAMILY ROOM (RUBY FLOOR PLAN ONLY)



# AMETHYST

## THREE BEDROOM HOME

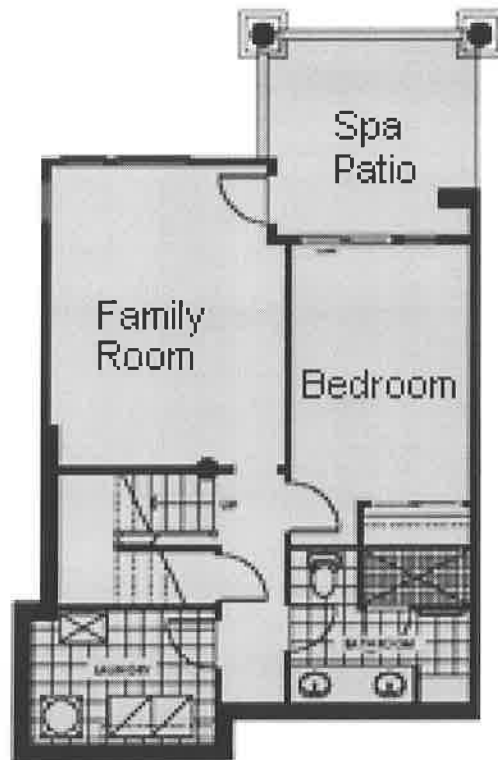
1,993 SQUARE FEET



# RUBY

## THREE BEDROOM HOME

2,414 SQUARE FEET

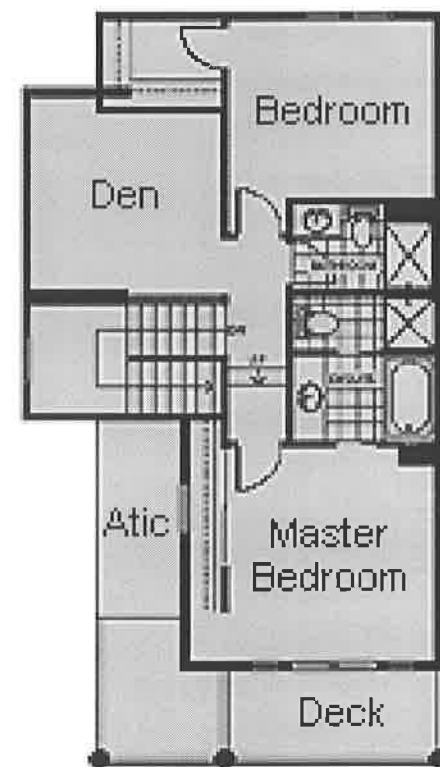
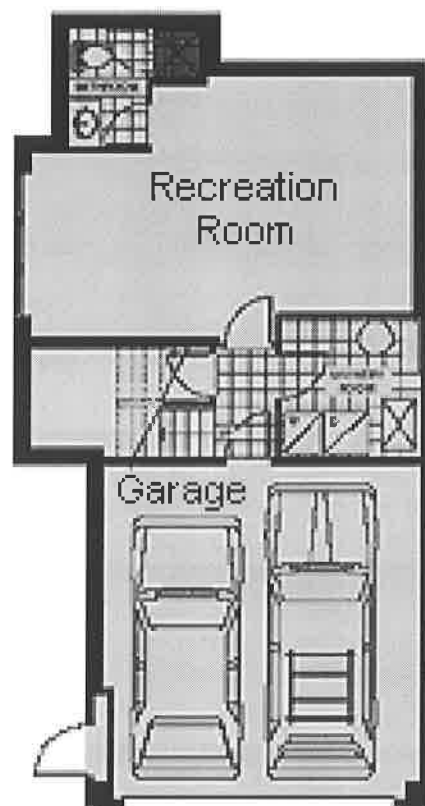




# EMERALD

THREE BEDROOM + DEN

2,221 SQUARE FEET



# SAPPHIRE

## THREE BEDROOM HOME

1,554 SQUARE FEET

